





## VISION

Bath & North East Somerset (B&NES) is a Compassionate Community in which people are inspired and supported to look after themselves and each other.

## MISSION STATEMENT

Our ambition is to nurture a grassroots social movement which recognises there are people and organisations supporting each other, who care, are available and can step in as and when needed, with actual or virtual support. We will do this by sharing a common brand that can amplify the existing skills and resources of the Council, education providers, healthcare, 3rd sector, faith community, businesses, residents and volunteers.

## WHY US?

We are people who live, volunteer or work in B&NES that are passionate about creating a more compassionate society that empowers people to look after each other and their communities. We aim to raise the profile of the thousands of professionals and volunteers who already work tirelessly to enrich our area and support those who need it most.

## OBJECTIVE

Our primary objective is to share the Compassionate Community brand to help promote existing services. This will enable people in need to easily access local support and as a result of our work more people will get the help they need and residents, students and businesses will be motivated to take action.

This will make B&NES a more sustainable, compassionate and healthy place and give individuals the confidence to take positive action when it's needed. As signatories we commit to sharing Compassionate Community resources and working in partnership to ensure there are no barriers to entry for anyone that wants to join our movement.

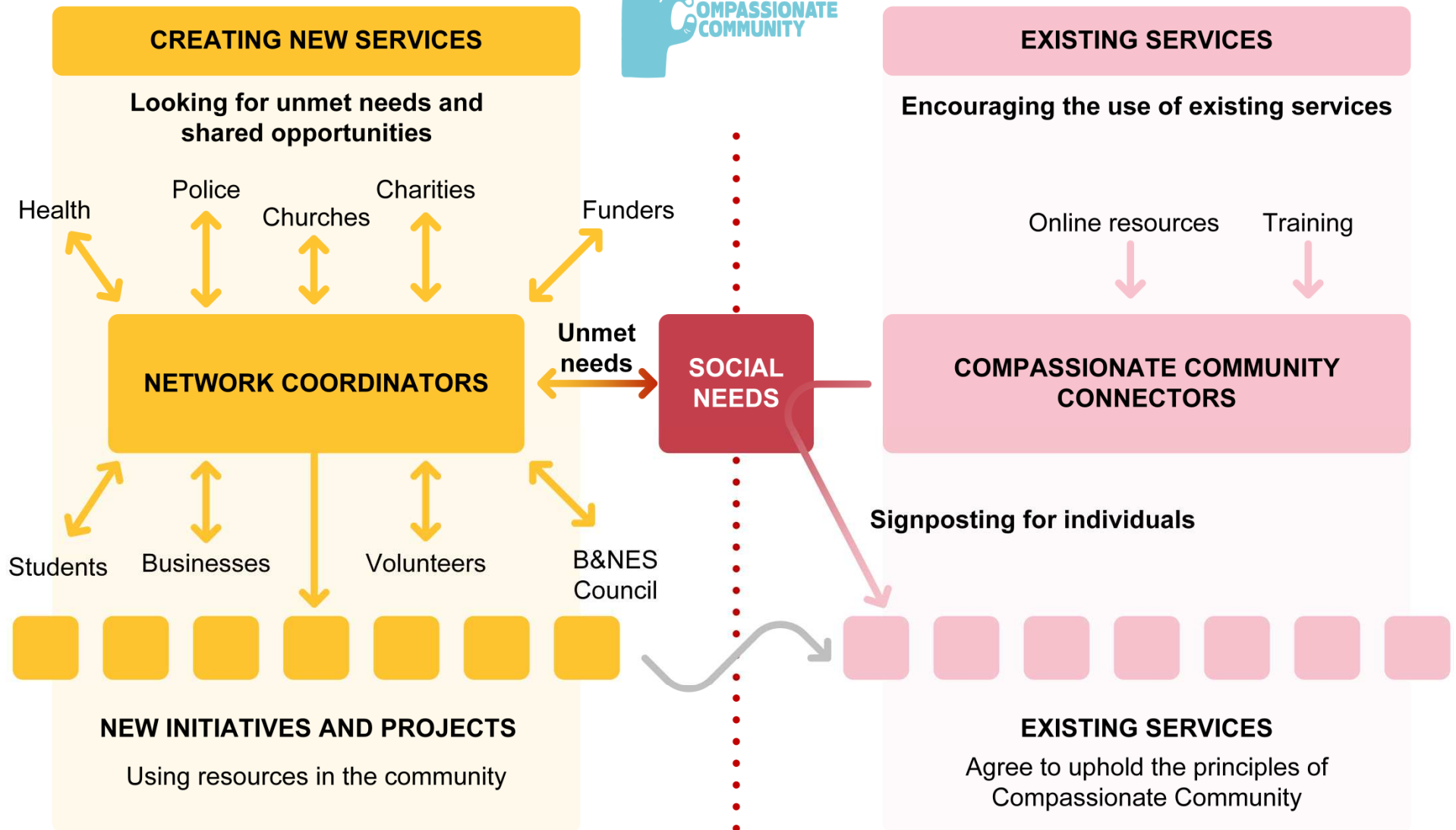
## I AGREE TO UPHOLD THE PRINCIPLES OF COMPASSIONATE COMMUNITY

Signed:

Organisation name:

Find out more: <https://www.3sg.org.uk/>







B&NES 3rd Sector Group

# 3rd Sector Gathering 2020

Wednesday 26th February 2020 (9.30 am - 1 pm)

Komedia Bath

[3sg.org.uk/events](http://3sg.org.uk/events)





## Update on the Banes Swindon and Wiltshire CCG Merger

Join us on 18th February to find out more about the merger of the Banes, Swindon and Wiltshire Clinical Commissioning Group (BSW CCG) with Nicki Millin, Director of Strategy and Transformation at the BSW CCG.

Topics covered on the morning will include:

- Update on the CCG merger.
- Overview of five- year plan and priorities
- Banes Primary Care Networks - the opportunities
- Opportunities for collaboration

Followed by time for a Q&A

**FREE**

Single Admission

[GET TICKETS](#)

Starts Tue 18th Feb 2020 10:00am

Ends Tue 18th Feb 2020 11:30am

### Location

Bath Royal Literary and Scientific Institution

16-18 Queen Square

Bath

BA1 2HN

GB

